

Fire & Evacuation Escape Route



Tan Tock Seng
HOSPITAL
National Healthcare Group

CENTRE FOR
HEALTHCARE
INNOVATION®

Restricted

CENTRE FOR
HEALTHCARE
INNOVATION®

Fire Evacuation Routing – Level 4

1. Look out for the **EXIT** sign and proceed to the nearest emergency exit staircases.
2. Proceed to the designated **Assembly Area (AA)**.
3. Report to respective Leads / POCs for your attendance.
4. Respective Leads / POCs to inform **SCDF Officer** of any missing person in order for SCDF to commence search operations.

IMPORTANT

- DO NOT USE THE LIFTS
- DO NOT RE-ENTER THE BUILDING UNTIL APPROVAL BY SCDF OFFICER



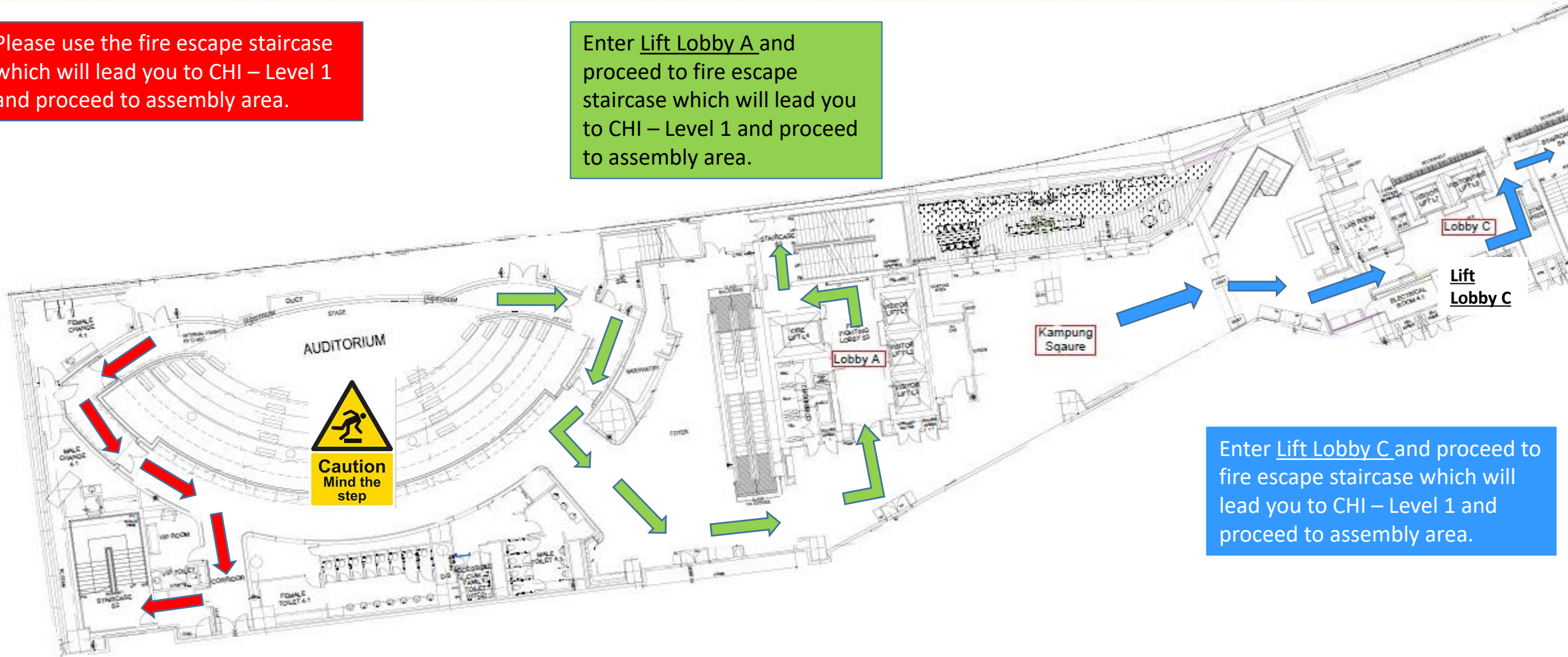
DO NOT PANIC! STAY CALM!

Fire Evacuation Routing – Level 4

Please use the fire escape staircase which will lead you to CHI – Level 1 and proceed to assembly area.

Enter Lift Lobby A and proceed to fire escape staircase which will lead you to CHI – Level 1 and proceed to assembly area.

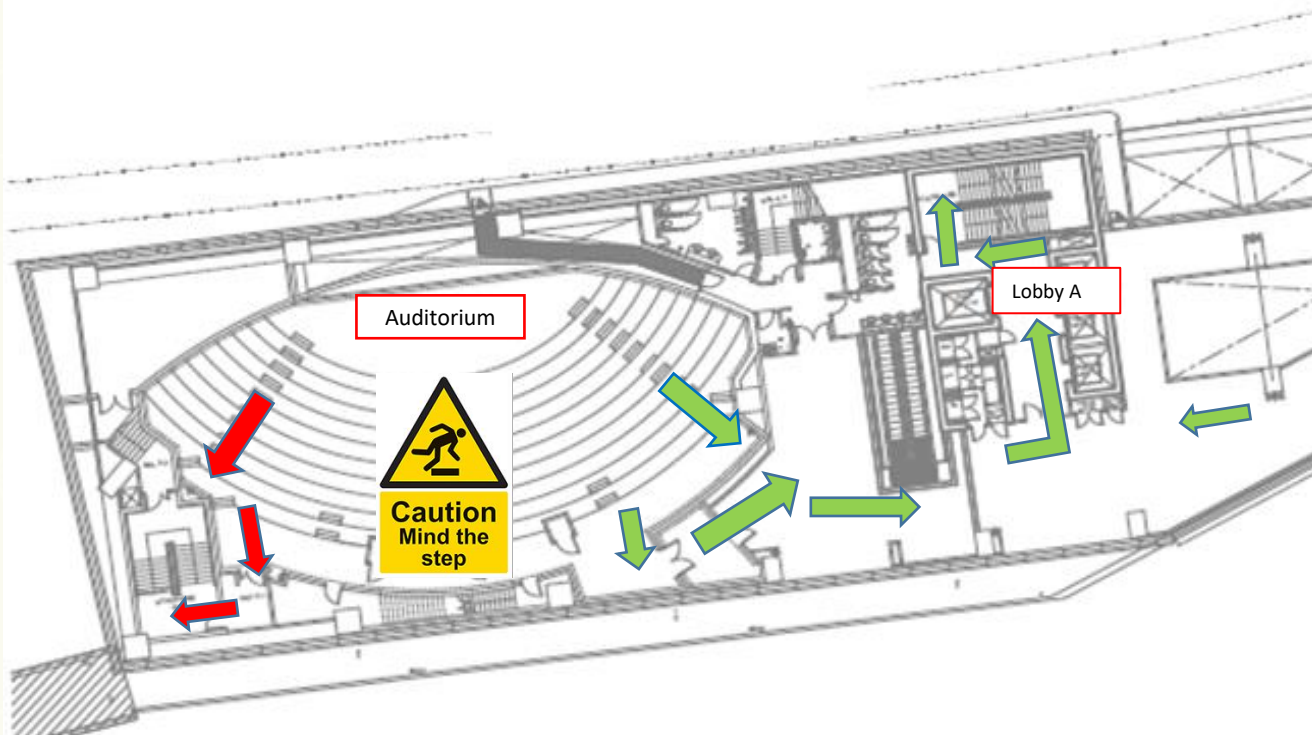
Enter Lift Lobby C and proceed to fire escape staircase which will lead you to CHI – Level 1 and proceed to assembly area.



Fire Evacuation Routing – Level 5

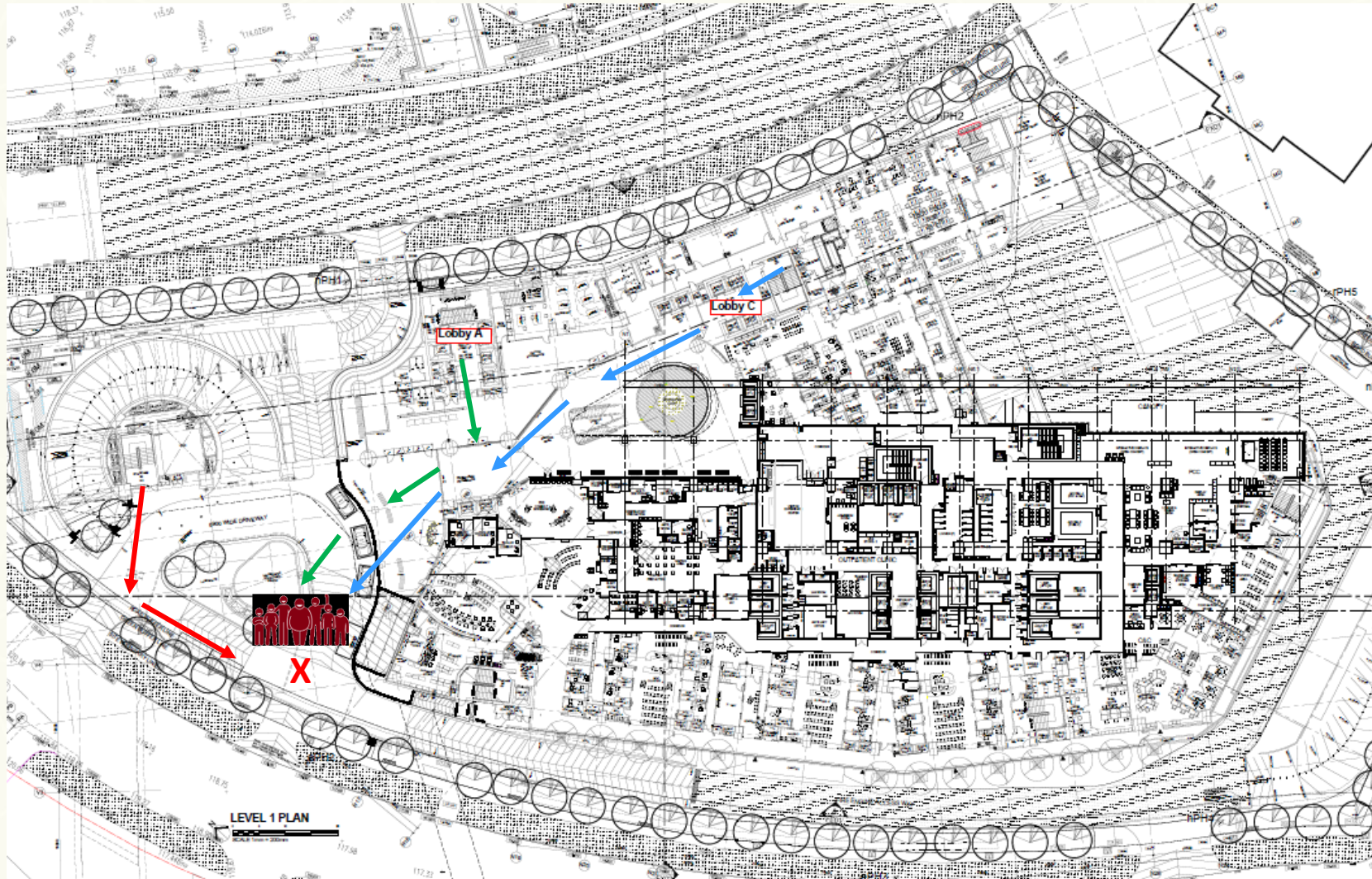
Please use the fire escape staircase which will lead you to CHI – Level 1 and proceed to assembly area.

Enter Lift Lobby A and proceed to fire escape staircase which will lead you to CHI – Level 1 and proceed to assembly area.



Restricted

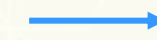
Assembly Area at NCID Driveway



Lobby A Staircase Route



Auditorium Stairway Route



Lobby C Staircase Route



Assembly Area

Event Organisers are responsible for the group attendance and participants can disperse after attendance taken.

Assembly Area at Level 1 (NCID Driveway)

